



VOLTOUR
E-BIKES

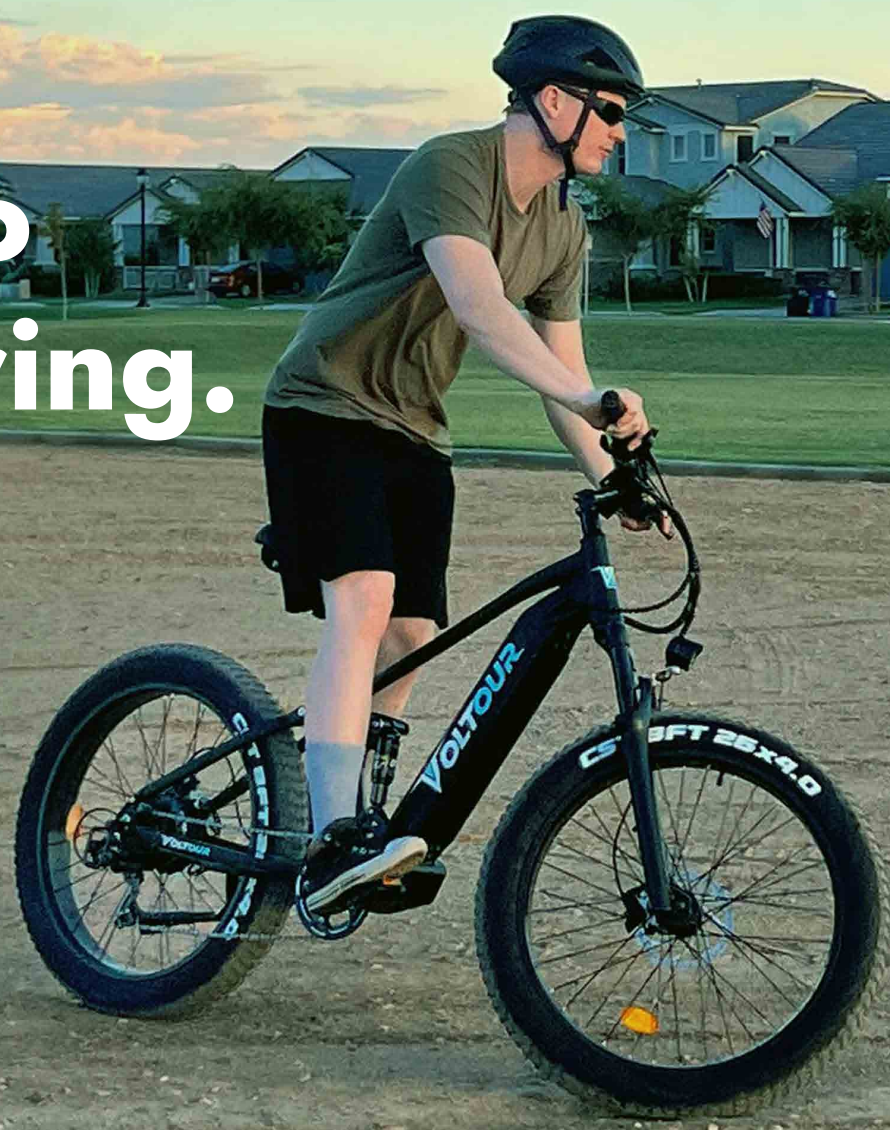
VOLTOUR

**20
23**

PRODUCT
CATALOG

WWW.VOLTOUR.COM

Let's go Voltouring.



About Us

At Voltour, we design our electric bikes with performance and versatility in mind. Our mission is to provide a new way to travel, whether for pleasure or business, that is both eco-friendly and affordable for everyone!

04

FOLDING

10

FOLDING STEP-THRU

14

CITY

18

MOUNTAIN

21

BATTERIES

26

ACCESSORIES

A ride style for everyone.



PATRIOT



20EB-FOLDBK



20EB-FOLDWT

2023 VOLTOUR E-BIKES FOLDING

All Voltour electric bikes have a motor and battery built into the bike's frame to assist the rider on a long commute, up a hill, or on other terrains that may require more effort. Take a ride on the Patriot! It is our top-of-the-line e-bike with a step-over frame from our folding bike category. Its foldable functionality makes it easy to store and transport anywhere. Equipped with a high-powered 750W motor, the Patriot allows you to enjoy the journey whether you're traveling short distances or an adventure through a wilderness trail.

- COLOR** ○ ●
- MOTOR** 750W (peak) 48V Brushless BAFANG Motor
- POWER** Removable Li-ion 48V, 11.6Ah (557Wh)
- ✔ 20" 6061 Aluminum Alloy Foldable Frame
 - ✔ Adjustable & Lockable Front Suspension
 - ✔ Taiwan CST 20" x 4.0" Fat Tires
 - ✔ Shimano 7 Speed Derailleur
 - ✔ Mechanical Disc Brake with Power Off Function
 - ✔ Class 2 / 20 MPH
 - ✔ LCD Colorful Display
 - ✔ LED Headlight
 - ✔ Rear Rack Included

PATRIOT



TRAILRIDER



20EB-FD300BK



20EB-FD300WT



20EB-FD300GRN



20EB-FD300RD

2023 VOLTOUR E-BIKES FOLDING

The TrailRider is an e-bike with a step-over and foldable frame. Designed to be lightweight and compact, the TrailRider's frame integrates the battery in-tube to ensure a stable and enjoyable ride. Its foldable functionality makes it easy to store and transport anywhere. Equipped with a high-powered 300W motor, the TrailRider is the perfect e-bike to bring along on an adventure.

- COLOR** ○ ● ● ●
- MOTOR** 300W (peak) 48V Brushless Motor
- POWER** Removable Li-ion 48V, 7.5Ah (360Wh)
- ✔ 20" 6061 Aluminum Alloy Foldable Frame
 - ✔ Weight (w/battery): 47.4 lbs
 - ✔ Taiwan CST 20" x 2.4" Tires
 - ✔ Rear Rack Included
 - ✔ Mechanical Disc Brake with Power Off Function
 - ✔ Class 2 / 20 MPH
 - ✔ LCD Colorful Display
 - ✔ LED Headlight

TRAILRIDER



**Fold it. Move it.
Anywhere.**



VOLTOUR



Easy.



Comfortable.



Fun.



ROADRUNNER



20EB-FOLDSTBK



20EB-FOLDSTWT



20EB-FOLDSTBLUE



20EB-FOLDSTRED

2023 VOLTOUR E-BIKES FOLDING STEP-THRU

The RoadRunner is our top-of-the-line e-bike with a step-thru frame from our folding bike category. Its foldable functionality makes it easy to store and transport anywhere. Equipped with a high-powered 750W motor, a LCD color display and high-quality components, the RoadRunner is a perfect combination of present-day features and easy up-keep.

- COLOR** ○ ● ● ●
- MOTOR** 750W (peak) 48V Brushless BAFANG Motor
- POWER** Removable Li-ion 48V, 11.6Ah (557Wh)
- ✔ 20" 6061 Aluminum Alloy Foldable Frame
 - ✔ Adjustable & Lockable Front Suspension
 - ✔ Taiwan CST 20" x 4.0" Fat Tires
 - ✔ Shimano 7 Speed Derailleur
 - ✔ Mechanical Disc Brake with Power Off Function
 - ✔ Class 2 / 20 MPH
 - ✔ LCD Colorful Display
 - ✔ LED Headlight
 - ✔ Rear Rack & Wire Basket Included



ROADRUNNER



DASH



ROADRUNNER



DASH



ROADRUNNER



DASH

DASH



320-STFDBLK



320-STFDWHT

The Dash is an e-bike with a step-thru and foldable frame. Its step-thru frame makes it easy to hop on and off. And the foldable functionality makes it easy to store and transport anywhere. Equipped with a high-powered 500W motor, Dash is the perfect e-bike to bring along on an adventure.

- COLOR** ○ ●
- MOTOR** 500W (peak) 48V Brushless Motor
- POWER** Removable Li-ion 48V, 10Ah (480Wh)
- ✔ 20" 6061 Aluminum Alloy Foldable Frame
 - ✔ Adjustable & Lockable Front Suspension
 - ✔ Taiwan CST 20" x 3.0" Tires
 - ✔ Shimano 7 Speed Derailleur
 - ✔ Mechanical Disc Brake with Power Off Function
 - ✔ Class 2 / 20 MPH
 - ✔ LCD Colorful Display
 - ✔ LED Headlight
 - ✔ Rear Rack & Wire Basket Included

Commute in style.



JET



26EB-CITYBK
26EB-CITYBK-500W



26EB-CITYWT
26EB-CITYWT-500W

The Jet is an e-bike with a step-thru frame. Its step-thru frame makes it easy to hop on and off. Equipped with a high-powered motor and a LCD color display, Jet is the perfect e-bike for daily commuting.

- COLOR** ○ ●
- MOTOR** 350W (peak) 48V Brushless BAFANG Motor
500W (peak) 48V Brushless Motor
- POWER** Removable Li-ion 48V, 11.6Ah (557Wh)
- ✔ 26" 6061 Aluminum Alloy Frame
 - ✔ Adjustable & Lockable Front Suspension
 - ✔ Taiwan CST 26" x 2.0" Tires
 - ✔ Shimano 7 Speed Derailleur
 - ✔ Hydraulic Disc Brake with Power Off Function
 - ✔ Class 2 / 20 MPH
 - ✔ LCD Colorful Display
 - ✔ LED Headlight
 - ✔ Rear Rack & Wire Basket Included

JET



**We believe in creating
a way for everyone
to move around and
about, whether for
commuting or for fun.**



VOLTOUR

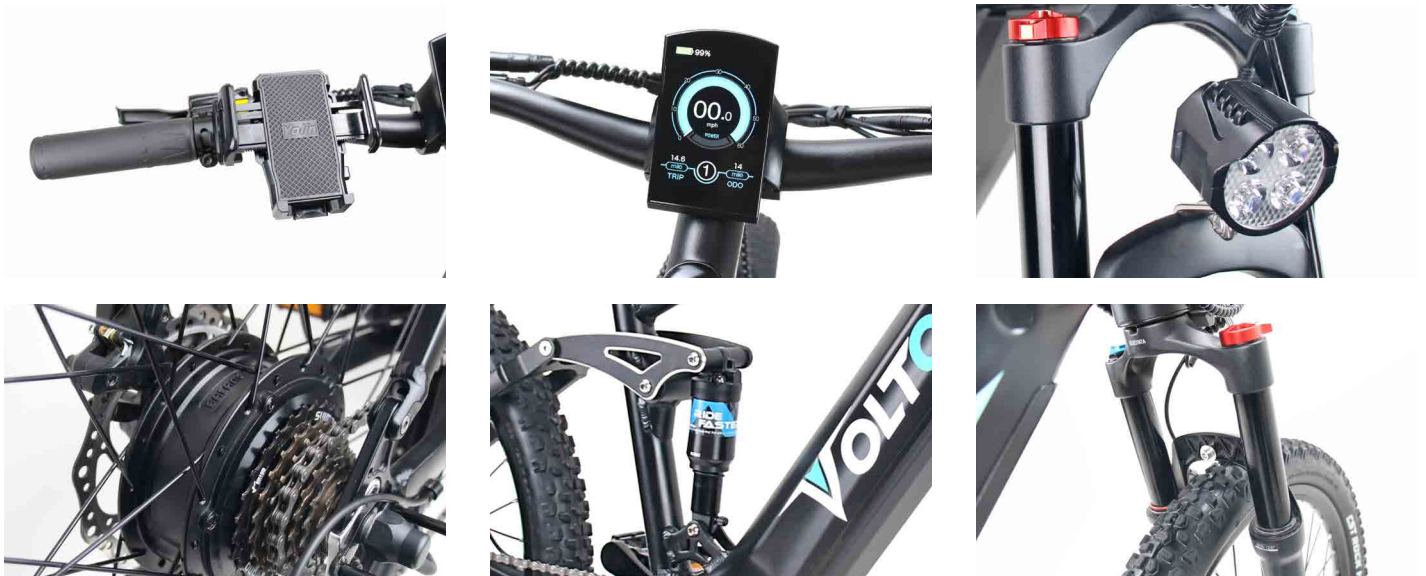
**Explore
the terrain.**



RANGER



26EB-MTN-500W



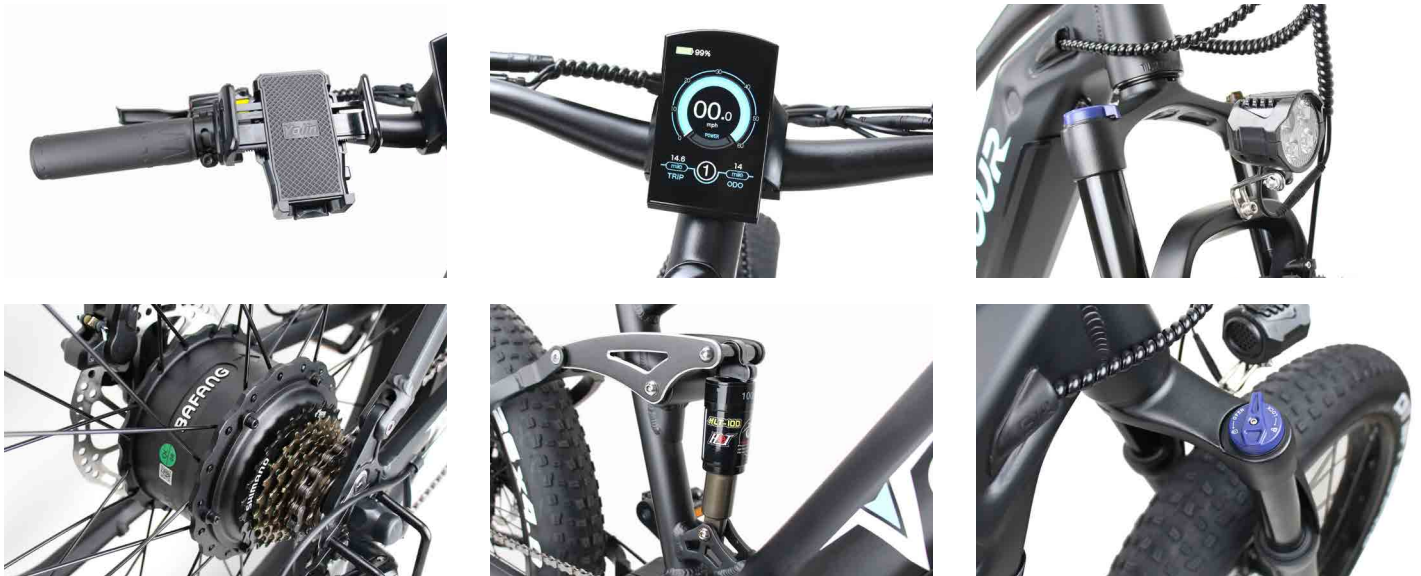
The Ranger is our top-of-the-line electric mountain e-bike. Its sleek design and high-powered motor and battery offers high performance components that allows you to enjoy the journey whether you're traveling short distances or an adventure through a bumpy trail. Equipped with a double upgraded suspension and high-powered 500W motor, Ranger is the perfect e-bike for your wilderness excursions.

- COLOR** ○
- MOTOR** 500W (peak) 48V Brushless BAFANG Motor
- POWER** Removable Li-ion 48V, 14.5Ah (696Wh)
- ✔ 26" 6061 Aluminum Alloy Frame
 - ✔ Air-lock Suspension Fork
 - ✔ Dual Air-chamber Rear Suspension
 - ✔ Taiwan CST 26" x 2.4" Tires
 - ✔ Shimano 7 Speed Derailleur
 - ✔ Hydraulic Disc Brake with Power Off Function
 - ✔ Class 2 / 20 MPH
 - ✔ LCD Colorful Display
 - ✔ LED Auto Headlight

RANGER



26EB-MTN



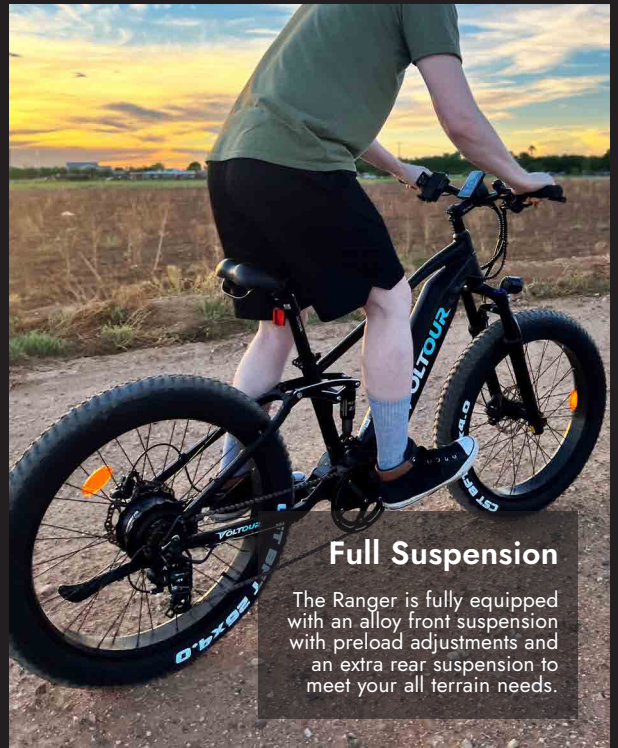
Take a ride on the Ranger! Its sleek design and high-powered motor and battery offers high performance components that allows you to enjoy the journey whether you're traveling short distances or an adventure through a bumpy trail. The Ranger is our top-of-the-line electric mountain e-bike. Equipped with a high-powered 750W motor, full suspension and 4" fat tires, Ranger is the perfect e-bike for your wilderness excursions.

- COLOR** ○
- MOTOR** 750W (peak) 48V Brushless BAFANG Motor
- POWER** Removable Li-ion 48V, 14.5Ah (696Wh)
- ✔ 26" 6061 Aluminum Alloy Frame
- ✔ Adjustable & Lockable Front Suspension
- ✔ Multi-link Shock Absorber Rear Suspension
- ✔ Taiwan CST 26" x 4.0" Fat Tires
- ✔ Shimano 7 Speed Derailleur
- ✔ Hydraulic Disc Brake with Power Off Function
- ✔ Class 2 / 20 MPH
- ✔ LCD Colorful Display
- ✔ LED Auto Headlight



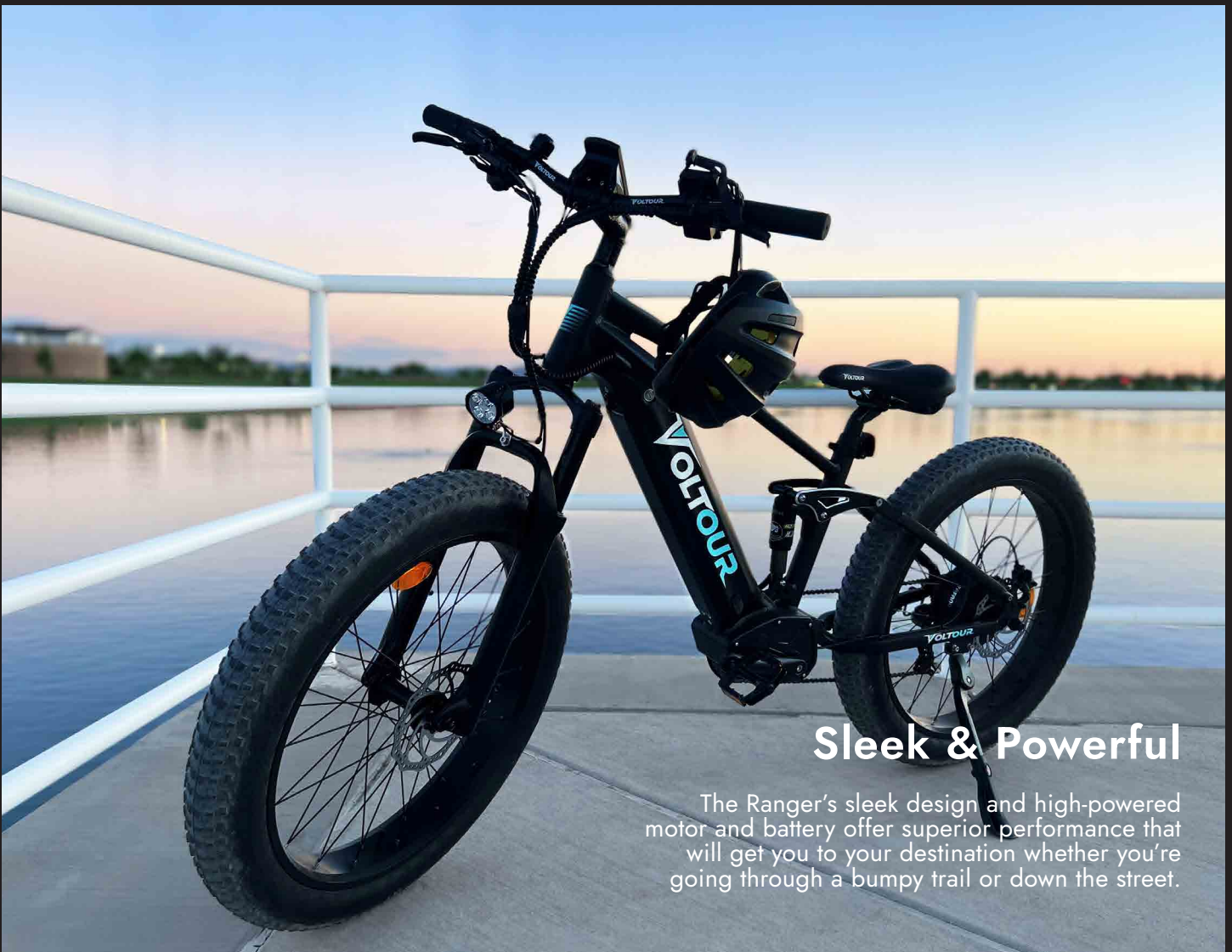
All Terrain Fat Tires

Travel with confidence using the Ranger with its fat 26"x4.0" all terrain tires for improved grip and traction on any terrain, such as rocky, snowy, or paved.



Full Suspension

The Ranger is fully equipped with an alloy front suspension with preload adjustments and an extra rear suspension to meet your all terrain needs.

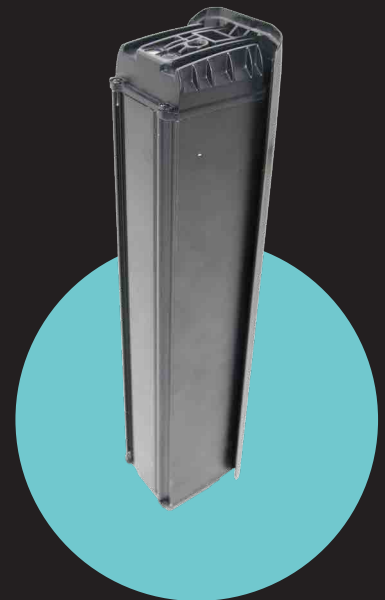


Sleek & Powerful

The Ranger's sleek design and high-powered motor and battery offer superior performance that will get you to your destination whether you're going through a bumpy trail or down the street.



Removable Li-ion Battery for longer ride and more fun.





Electric Bike Li-ion Battery - Spare
BKBT001-FD
48V 11.6Ah, 557Wh

▼ **Compatibility:** Voltour Patriot



Electric Bike Li-ion Battery - Upgrade
BKBT003-FD
48V 14Ah, 672Wh

▼ **Compatibility:** Voltour Patriot



Electric Bike Li-ion Battery - Spare
BKBT004-CT
48V 11.6Ah, 557Wh

▼ **Compatibility:** Voltour Jet & Roadrunner



Electric Bike Li-ion Battery - Upgrade
BKBT006-CT
48V 14Ah, 672Wh

▼ **Compatibility:** Voltour Jet & Roadrunner

NOTE: Riders should be familiar with their average battery use based on typical weight load, terrain, weather, and other conditions.



Electric Bike Li-ion Battery - Spare

BKBT007-MTN

48V 14.5Ah, 696Wh

✔ **Compatibility:** Voltour Ranger



Electric Bike Li-ion Battery - Upgrade

BKBT008-MTN

48V 17.5Ah, 840Wh

✔ **Compatibility:** Voltour Ranger



Electric Bike Li-ion Battery - Spare

BKBT009-STF

48V 10Ah, 480Wh

✔ **Compatibility:** Voltour Dash



Electric Bike Li-ion Battery - Upgrade

BKBT010-STF

48V 14Ah, 672Wh

✔ **Compatibility:** Voltour Dash

NOTE: Riders should be familiar with their average battery use based on typical weight load, terrain, weather, and other conditions.



Electric Bike Li-ion Battery - Spare

BKBT0011-FD3

48V 7.5Ah, 360Wh

▼ **Compatibility:** Voltour Trailrider



Electric Bike Li-ion Battery - Upgrade

BKBT0012-FD3

48V 11.6Ah, 557Wh

▼ **Compatibility:** Voltour Trailrider



Electric Bike Li-ion Battery - Upgrade

BKBT0013-FD3

48V 14Ah, 672Wh

▼ **Compatibility:** Voltour Trailrider

NOTE: Riders should be familiar with their average battery use based on typical weight load, terrain, weather, and other conditions.



**Ride
comfortably
with your
ideal setup.**



Snow Tire
SNTE20-4B
Taiwan CST, 20"x4.0"

▼ **Compatibility:** Voltour Patriot & Roadrunner



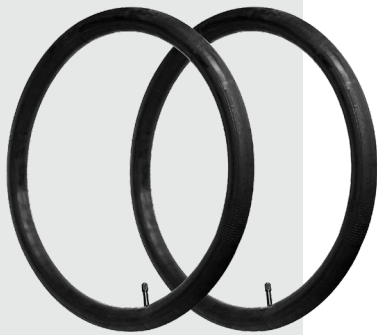
Inner Tubes
BRINTB20-4B
Taiwan CST, 20"x4.0"

▼ **Compatibility:** Voltour Patriot & Roadrunner



Bike Tire
CTYPLRUBB26-2
Taiwan CST, 26"x2.0"

▼ **Compatibility:** Voltour Jet



Inner Tubes
BRINTB26-2C
Taiwan CST, 26"x2.0"

▼ **Compatibility:** Voltour Jet



Snow Tire
SNTE26-4A
Taiwan CST, 26"x4.0"

✔ **Compatibility:** Voltour Ranger



Inner Tubes
BRINTB26-4A
Taiwan CST, 26"x4.0"

✔ **Compatibility:** Voltour Ranger



Bike Tire
SNTE26-2A
Taiwan CST, 26"x2.4"

✔ **Compatibility:** Voltour Ranger (500W)



Inner Tubes
BRINTB26-2A
Taiwan CST, 26"x2.4"

✔ **Compatibility:** Voltour Ranger (500W)



Bike Tire
FD300-TIRE
Taiwan CST, 20"x2.4"

▼ **Compatibility:** Voltour Trailrider



Inner Tubes
FD300-BRIT01
Taiwan CST, 20"x2.4"

▼ **Compatibility:** Voltour Trailrider



Bike Tire
320-TIRE
Taiwan CST, 20"x3.0"

▼ **Compatibility:** Voltour Dash



Inner Tubes
320-BRIT01
Taiwan CST, 20"x3.0"

▼ **Compatibility:** Voltour Dash



Large Saddle

BKST001

Black PU Leather, 270x242mm

The wider seat with dual coils underneath provides extra comfort during your ride.

✔ **Compatibility:** Voltour Jet



Regular Saddle

BKST002

Black PU Leather, 270x190mm

✔ **Compatibility:** Voltour Patriot, Ranger, Roadrunner and Dash



Regular Saddle

FD300-BKBS

Black PU Leather, 270x190mm

✔ **Compatibility:** Voltour Trailrider



Cargo Basket

BKBC001

Black iron square basket, 34x34x17cm

Adding this cargo basket to your bike will allow you to transport even more cargo.

✔ **Compatibility:** Voltour Jet, Roadrunner, Dash and Trailrider



Phone Mount

MBPHNS

USB mobile phone mount with charging function, PVC black

Ride safely by adding a phone mount to your e-bike. This mount makes it easy to navigate to your next destination.

▼ **Compatibility:** Voltour Ranger



Seat Post

FD300-SDTB

33.9x350mm aluminum alloy

▼ **Compatibility:** Voltour Trailrider



Seat Post

SDTB-FOLDST

30.4x400mm aluminum alloy

▼ **Compatibility:** Voltour Roadrunner



Rear Mirrors

BKMI001

Pair of mirrors with black PVC bracket, die-cast aluminum alloy locking clip ring and glass lens with explosion-proof film.

Add mirrors to your e-bike to ensure a safer commute through the streets.

▼ **Compatibility:** Voltour Patriot, Jet, Dash, Roadrunner, Trailrider and Ranger



Folding Bike Lock

BCLK001

Iron folding lock with PVC lock sleeve, hook and loop. Two keys included.

Secure your e-bike anywhere you go! This folding lock is compact making it easy to bring along on your ride.

- ✔ **Compatibility:** Voltour Patriot, Jet, Roadrunner, Dash, Trailrider and Ranger



Folding Pedals

BKPED

Pair of high-strength resin folding pedals with reflectors.

- ✔ **Compatibility:** Voltour Patriot, Roadrunner and Dash



Folding Pedals

BKPED-CM

Pair of high-strength resin folding pedals with reflectors.

- ✔ **Compatibility:** Voltour Trailrider



Bike Pedals

BKPED-FD3

Pair of ball bearing aluminium pedals with reflectors.

- ✔ **Compatibility:** Voltour Ranger and Jet



Folding Hitch Bike Rack

BR01ADV

Constructed with reinforced steel, this bike rack can carry 2 bikes weighing 75 lbs each. It fits 17 to 29 inch wheels, up to 63-1/3 inch wheelbase, up to 5 inch tires, 2 inch receiver. It is also equipped with safety strap, anti-wobble lock and anti-theft locking device. The rear tilting design enables user to open the rear gate without detaching the hitch rack. Rack folds easily for storage on or off vehicle.

- ▼ **Compatibility:** Voltour Patriot, Jet, Roadrunner, Dash, Trailrider and Ranger

**Join us for a
ride f**



new way to
reely.





VOLTOUR

Contact Us at:

☎ 1-855-233-9199 ✉ info@voltour.com

3000 E CHAMBERS ST., PHOENIX, AZ 85040

